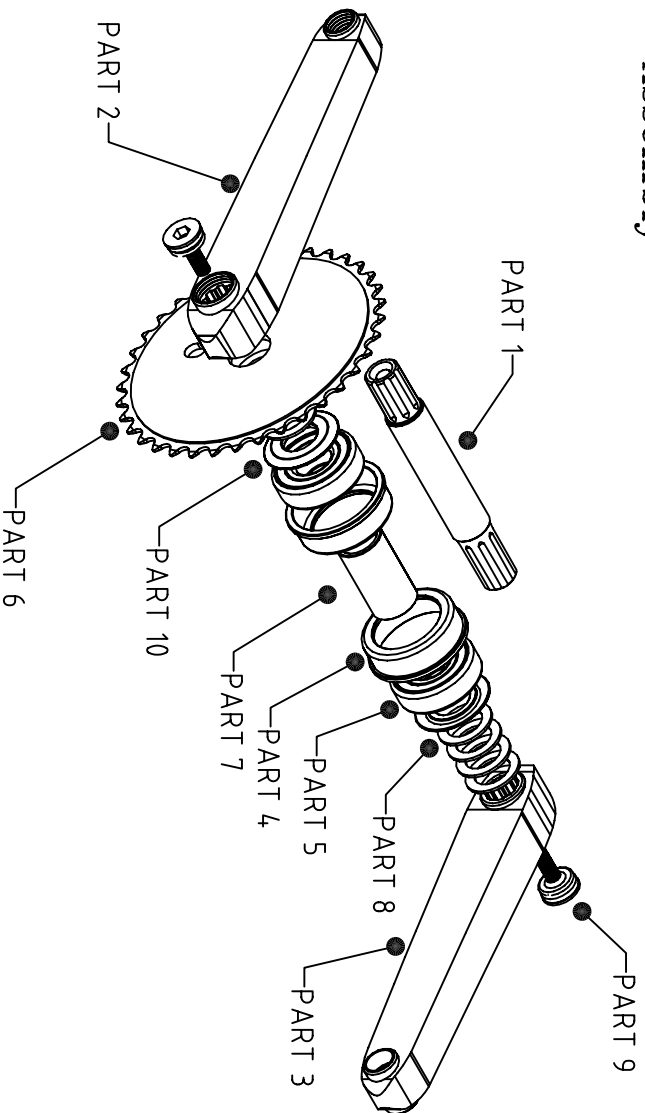
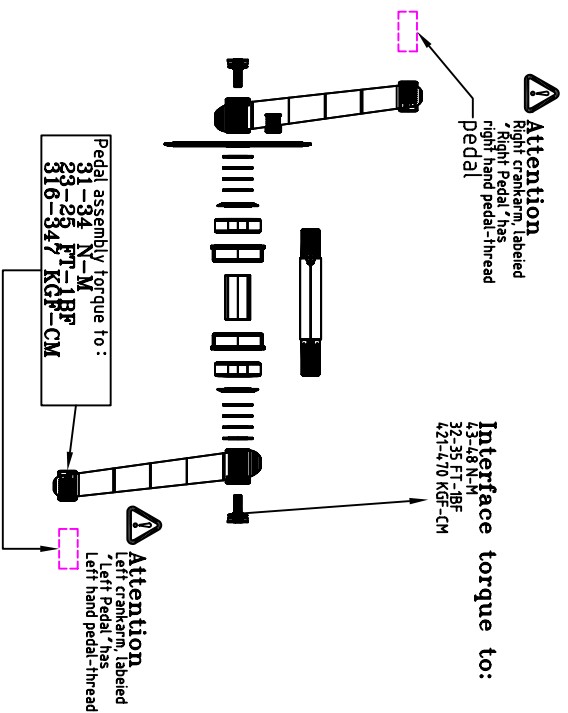


Assembly



PARTS

- Part 1: Spindle
- Part 2: Crankarm (Right)
- Part 3: Crankarm (Left)
- Part 4: Light alloy cups
- Part 5: Bearings
- Part 6: Chainwheel (thickness:2.6mm)
- Part7: Light alloy mid- tube
- Part 8: Spacer
- Part 9: Cotterless axle bolts
- Part10: Adapter



Spiderless BMX cranksets

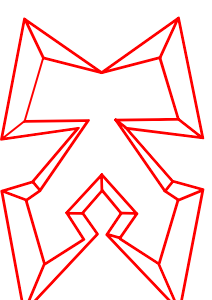
Thank you for purchasing a KCNC crankset ,The following instructions should be read thoroughly before installation Improper installation of your KCNC crankset may cause an unexpected failure of the parts that could cause you to lose control of your bicycle resulting in serious injury or death, We recommend having your parts installed by a qualified bicycle technician KCNC assumes no responsibility for malfunction or injury due to faulty installation.

Attention

This crankset's and bottom bracket is designed for BMX use only ,its not engineered for Downhill or Dirt jumping. Dual Slalom.

Warranty

If you feel a warranty claim,would like to learn more about our warranty policy,or have further questions or comments please visit our web site at www.kcnc.com.tw



NO 13,L CHU WEI, CHIN LING, HSIU SHUI,
CHANGHUA, TAIWAN,R.O.C
TEL : 886-4-7684363 FAX : 886-4-7684373
E-mail : kcnc@kcnc.com.tw
<http://www.kcnc.com.tw>
www.kcnbikes.com.tw