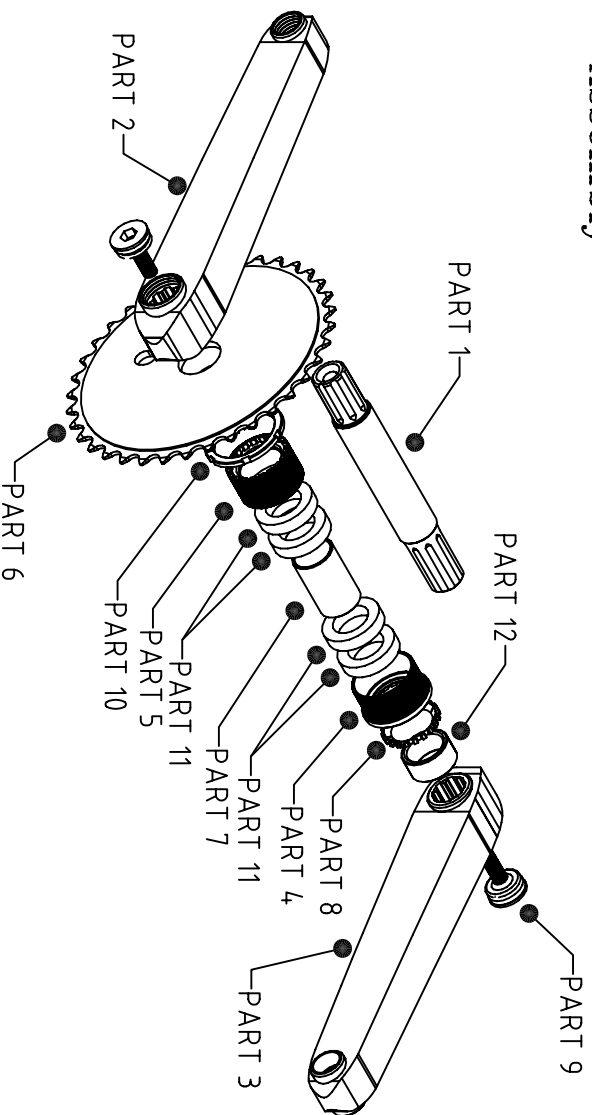


## Assembly



## PARTS

Part 1 : Spindle

Part 2 : Crankarm ( Right )

Part 3 : Crankarm ( Left )

Part 4 : Right steel cup

Part 5 : Left steel cup

Part 6 : Chainwheel

Part 7 : Steel mid- tube

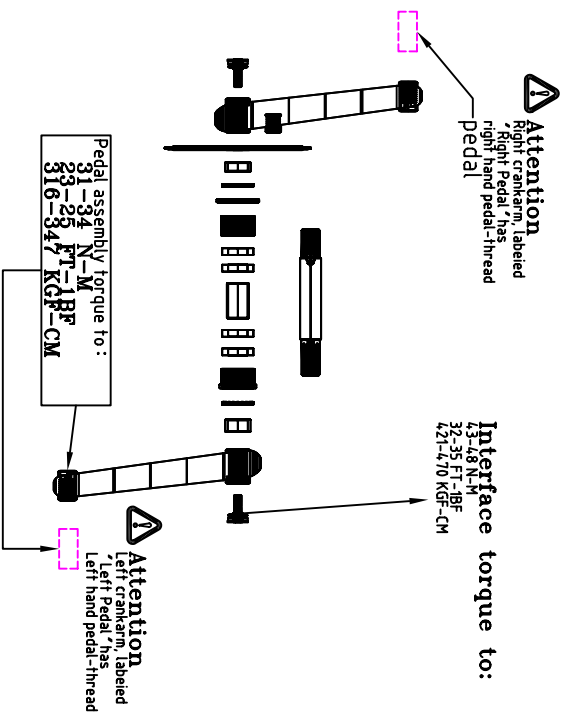
Part 8 : Proof O-ring

Part 9 : Cotterless axle bolts

Part 10 : Lock ring

Part 11 : Bearings

Part 12 : Spacer



## Spiderless MTB/BMX cranksets

Thank you for purchasing a KCNC crankset ,The following instructions should be read thoroughly before installation Improper installation of your KCNC crankset may cause an unexpected failure of the parts that could cause you to lose control of your bicycle resulting in serious injury or death, We recommend having your parts installed by a qualified bicycle technician KCNC assumes no responsibility for malfunction or injury due to faulty installation.



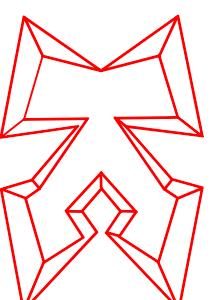
### Attention

This crankset's and bottom bracket is designed for MTB/BMX use only ,it's not engineered for Downhill or Dirt jumping. Dual Slalom.

### Warranty

If you feel a warranty claim,would like to learn more about our warranty policy,or have further questions or comments please visit our web site at [www.kcnc.com.tw](http://www.kcnc.com.tw)

[www.kenbikes.com.tw](http://www.kenbikes.com.tw)



NO 13,L CHU WEI, CHIN LING, HSIU SHUI,  
 CHANGHUA, TAIWAN,R.O.C  
 TEL : 886-4-7684363 FAX : 886-4-7684373  
 E-mail : [kcnc@kcnc.com.tw](mailto:kcnc@kcnc.com.tw)  
[www.kcnc.com.tw](http://www.kcnc.com.tw)  
[www.kenbikes.com.tw](http://www.kenbikes.com.tw)