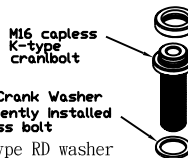


Thank you for purchasing a KCNC K-type RD cranks, The following instructions,Should be read thoroughly before installation. Improper installation of your KCNC K-type RD cranks may cause you an unexpected failure of the parts that could cause you to lose control of your bicycle resulting in serious injury or death,we recommend having your parts installed by a qualified bicycle technician.K bear bone assumes no responsibility for malfunction or injury due to faulty installation.

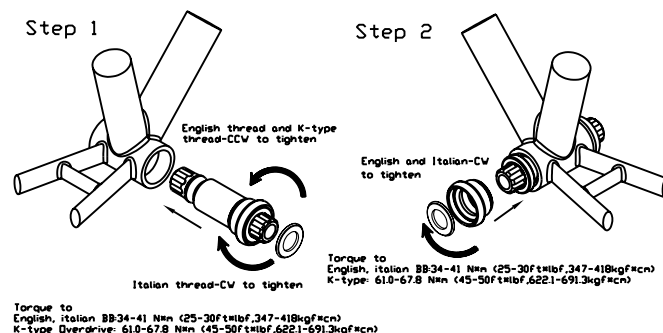
- Tools:1.Bottom bracket installation tool or equivalent
2.Torque wrench
3.6mm hex key for cranks axel

- Parts:1.Grease or Ti anti-seize
2.K-type RD interface
3.Self-extractor x2pcs
4.Thin Washer x2pcs
5.M16,K-type RD crankbolt x2pcs
6.Self-extractor crankbolt assembly(k-type RD washer may be permanent installed on capless bolt x2pcs
7.Pedal washer x2pcs

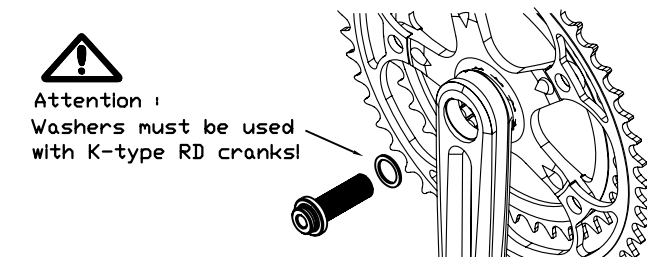


Step1.Assure the frame's bottom bracket shell threads are clean and undamaged, there should be no paint or dirt present.Have your bottom bracket shell chased and faced by your bike shop for best results,Check to make sure the threads of your K bear bone bottom bracket match the threads in the bottom bracket shell of your frame,(Italian or English threads)

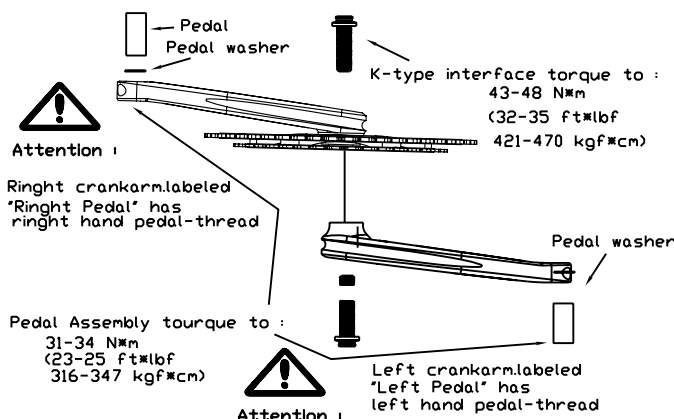
Step2.Thread the prepared bottom bracket into the drive side of the frame until the flange or spacer if applicable,bottoms against the frame shell face,Torque to (347-418 kgf-cm, 25-30 ft-lbf.Note the tightening direction for Italian and English bottom bracket shown in assembly



Step3.Thread the prepared left adapter cup into the non-driveside of the frame,the tightening direction for both English and Italian is the same for the left adapter cup,refer to assembly.The cup flange will not bottom against the left face of the frame shell.Torque the left adapter cup to(347-418 kgf-cm), 25-30 ft-lbf



Step4. If the crankbolts have not been assembled yet,assemble them as shown in Figure
1. K-type RD cranks must use the crank washer or damage will result when the crank are installed,Note that the crank washer may be manufacturered so tha its permanently installed on the crankbolt.



Apply grease to K-type RD splines,assemble the crankarms to the bottom bracket using 6 or 8 mm hex wrench,apply grease to the pedal threads and assemble the pedals to the crankarms ,and torque all bolts as shown in assembly.the assembly is now compete.